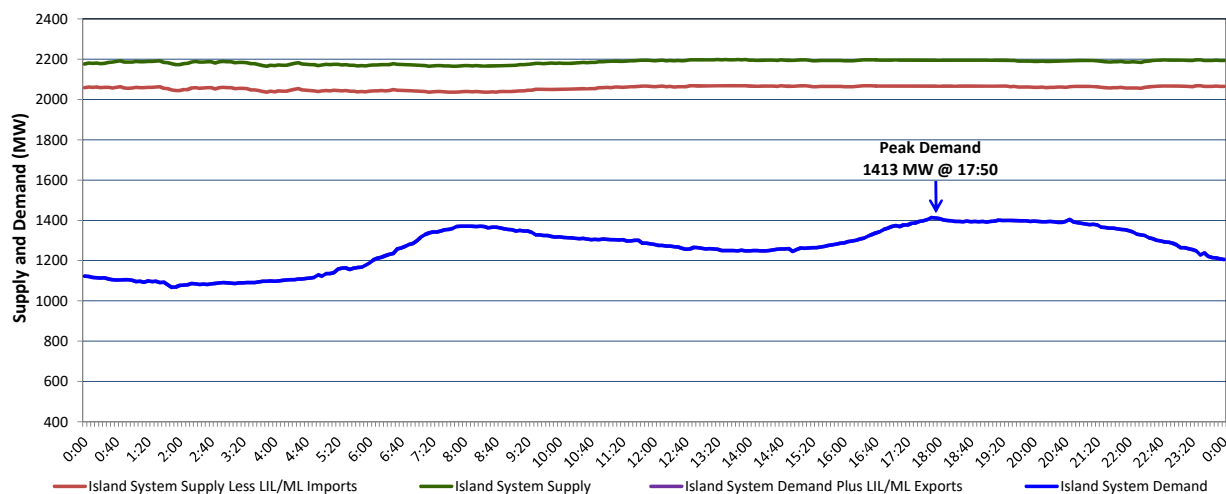


**Newfoundland Labrador Hydro (NLH)
Supply and Demand Status Report Filed Thursday, February 06, 2020**

**Section 1
Island Interconnected System Supply, Demand & Exports
Actual 24 Hour System Performance For Wednesday, February 05, 2020**



Supply Notes For February 05, 2020

1,2

**Section 2
Island Interconnected Supply and Demand**

Thu, Feb 06, 2020	Island System Outlook ³	Seven-Day Forecast	Temperature (°C)		Island System Daily Peak Demand (MW)	
			Morning	Evening	Forecast	Adjusted ⁷
Available Island System Supply: ⁵	2,070 MW	Thursday, February 6, 2020	-7	-4	1,555	1,449
NLH Island Generation: ⁴	1,695 MW	Friday, February 7, 2020	-3	-2	1,420	1,316
NLH Island Power Purchases: ⁶	150 MW	Saturday, February 8, 2020	5	-6	1,455	1,350
Other Island Generation:	225 MW	Sunday, February 9, 2020	-6	-7	1,475	1,370
ML/LIL Imports:	0 MW	Monday, February 10, 2020	-8	-4	1,535	1,429
Current St. John's Temperature & Windchill:	-8 -19 °C	Tuesday, February 11, 2020	-2	-3	1,390	1,286
7-Day Island Peak Demand Forecast:	1,555 MW	Wednesday, February 12, 2020	-1	1	1,390	1,286

Supply Notes For February 06, 2020

3

- Notes:
1. Generation outages for running and corrective maintenance are included. These are not unusual for power system operations. They generally do not impact customer supply. The power system operators schedule outages to system equipment whenever possible to coincide with periods when customer demands are low and sufficient supply reserves are available. However, from time to time equipment outages are necessary and reserves may be impacted.
 2. Due to the Island system having no synchronous connections to the larger North American grid, when there is a sudden loss of large generating units there may be a requirement for some customer's load to be interrupted for short periods to bring generation output equal to customer demand. This automatic action of power system protection, referred to as under frequency load shedding (UFLS), is necessary to ensure the integrity and reliability of system equipment. Under frequency events have typically occurred 5 to 8 times per year on the Island Interconnected System and the resultant customer load interruptions are generally less than 30 minutes. With the activation of the Maritime Link frequency controller during the winter of 2018, UFLS events have occurred less frequently.
 3. As of 0800 Hours.
 4. Gross output including station service at Holyrood (24.5 MW) and improved NLH hydraulic output due to water levels (35 MW).
 5. Gross output from all Island sources (including Note 4).
 6. NLH Island Power Purchases include: CBPP Co-Gen, Nalcor Exploits, Rattle Brook, Star Lake, Wind Generation and capacity assistance (when applicable).
 7. Adjusted for curtailable load, market activities and the impact of voltage reduction when applicable.

**Section 3
Island Peak Demand Information
Previous Day Actual Peak and Current Day Forecast Peak**

Wed, Feb 05, 2020	Actual Island Peak Demand ⁸	17:50	1,413 MW
Thu, Feb 06, 2020	Forecast Island Peak Demand		1,555 MW

Notes: 8. Island Demand / LIL / ML Exports (where applicable) is supplied by NLH generation and purchases, plus generation owned and operated by Newfoundland Power and Corner Brook Pulp & Paper (Deer Lake Power, DLP).